

Indoor full-featured network camera Quick Start Guide

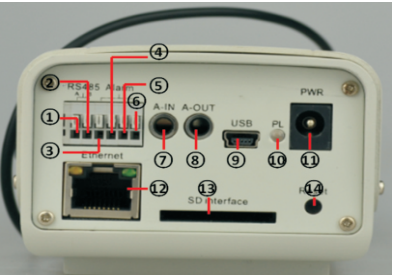
1 Statement

Thank you very much to buy our products, if you have any questions or need, please feel free to contact us. This manual applies to the Company's indoor high-definition network camera series and gun type full-function camera as an example, the remaining models, please refer to the manual operation.

This manual only contains simple operation instruction. For more information, please refer it to the CD.

We will upgrade the manual when the cube function enhanced.

2 Outlook & interface



No	Function	No	Function	No	Function
1	485A Interface	6	AlarmOutput	11	DC12V input
2	485B Interface	7	Audio Input	12	RJ45 Interface
3	GND	8	AudioOutput	13	SD card slot
4	Alarm Input	9	Mini USB Interface	14	Reset button
5	Alarm Output	10	Status Indicator		

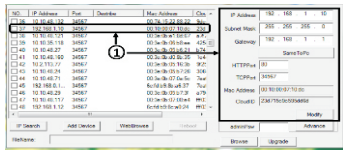
3 Boot up & IP configure

3.1 Boot up
Please use the formal 12V DC power adapter; otherwise the camera will work abnormal or even damage.

Please use the positive power of about 50 seconds of network cameras start complete, the network camera through a cable connected to the LAN.

3.2 IP config
Speed dome default IP config:
【IP address】:default is 192.168.1.10;
【Subnet Mask】:default is 255.255.255.0;
【Default Gateway】:default is 192.168.1.1.

Open the CD, double-click Setup.exe, go to 【English】 > 【Software】 > 【upgrade management】 to install upgrade management tools, then click 【IP search】 ,all online IP address of the monitoring devices within the LAN will be searched and displayed.



①: Choose one IP address
Choose IP address to config. IP address and port are displayed on the right, you can modify the IP parameters and click “Modify” to save.

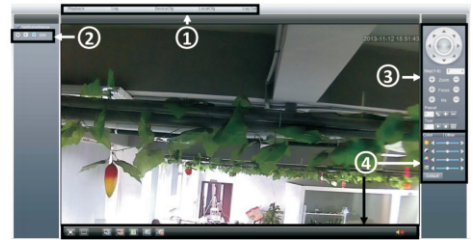
Note: IP address of the speed dome must share the same network segment with the router and conform to the router’s IP, and make sure the IP is not conflicted in the network of LAN. Go to<conform to local PC> to automatically match subnet mask and default gateway with local computer

4 LAN Access

4.1 IE Access
Open web browser, enter IP address, take 192.168.1.10 as an example, input http: //192.168.1.10 to connect.

Enter user name and password.(default user name is admin, no password). Change the administrator password timely after login.

After successful login, go to<stream menu> to connect main stream or sub-stream.



NO.	Function	NO.	Function
1	main menu	2	stream selection
3	PTZ control menu	4	Shortcut menu

Note: Plug-ins need to be installed if you login via IE browser. IE is default to intercept plug-in. Please set IE security level. Go to <internet options>--<security>--< Customized level>--<ActiveX >, enable them all. Or go to our official website to download and install plug-ins (<http://www.xmeye.net>); Or get it from the CD and install IE plug-in _V1.1.0.78.exe.

4.2 Client access
1. Open the CD, double-click Setup.exe, go to 【English】 > 【Software】 > 【CMS】 to install centralized network video management software.CMS shortcut icon will be displayed when installed successfully.

2.Double-click CMS shortcut icon, input user name and password(user name: super, no password) to login.



NO.	Function	NO.	Function
1	Channel display area	2	Preview area
3	Screen-split menu	4	Volume adjustment
5	main menu	6	PTZ control menu
7	Log display area		

3.Go to 【 Main Menu】 > 【 System】 > 【Device Manager】 to add speed dome to client, you can add camera via IP address, domain name, cloud or ARSP. Added cameras will be displayed in channel display area.

Adding visa IP supports both search adding and manual adding, adding by others methods support manual adding only.

①Search add: click 【IP search】 , all online IP address will be displayed, select one, click OK to finish.

Note: Search function only support adding via IP address.

② Manual add: Input the device name, IP address, domain name or serial number of the speed dome, click “ok” to finish the adding.

Note: Domain name, clouds and ARSP are under public network to add the device and that need Speed dome connected to Public network.

4. Double-click speed dome name in <channel display area>, right-click the channel name to choose main stream or sub-stream.

5. Control the rotation, zoom, focus, preset points, points cruise and other movements via PTZ control area.

4.3 Mobile Access
Network environment: WIFI, 3G
Mobile system: Android, Apple
Software Name: VmEyeSuper
Software Download: Google Market, App store

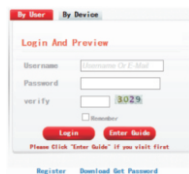
Note: if the speed dome can be visited on public network, it also can be achieved via VmEyeSuper on public network.

5 cloud operations

Cloud technology achieves one step to go on the Internet; it brings great convenience to customers in public network monitoring. For first time users, please click “Enter Guide”, or just skip.

5.1 PC access

1. Visit <http://xmeye.net> to login.



2. Install it step by step according to the guides prompt message.



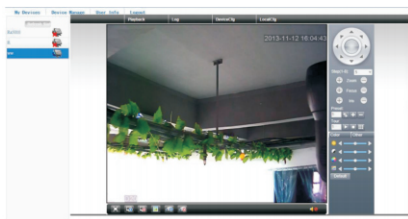
3. Click “Login” to enter cloud service interface, double-click left camera with alias name to connect to the preview, as follows:

4. After successful configuration, wherever and whenever you are, as long as you can surf the Internet, you can get access to the device.

PC monitoring: Login

<http://www.xmeye.net>; Login with user name and password that you registered (user name: guest, password: 123 as an example), click Login.

5. After login successful, the devices added to server will display on the left device list, click the device and get into the preview directly.



Note: When left device name shows with red cross, it means speed dome is not connected with cloud service website.

5.2 Mobile Access

Network environment: WIFI, 3G

Mobile system: Android, Apple

Software Name: VmEyeCloud

Software Download: Google Market, app store



【 Channel】 Choose the corresponding channel number. Choose “ALL” to make all the channels with same configuration

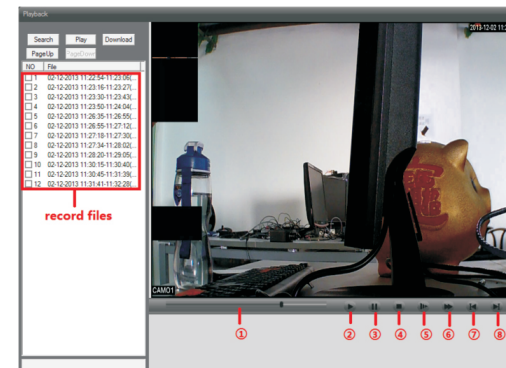
【 Length】 the time length of each video file can be set between 1min to 120min. 60 minutes is default value.

【 Redundancy】 Choose the redundancy function to double backup the file.

【 Record Control】 Set video state: timing, manual or stop. Configuration: Record according to the set video type (common, detection) and time section.

Manual: Corresponding channel starts recording 24 hours non-stop.

Stop: Whatever state the channel is in, the corresponding channel recording stops when stop button is selected.



No.	Function	No.	Function
1	Playback progress bar	2	Play
3	Pause playback	4	stop
5	Slow play	6	Fast play
7	Previous frame	8	Next frame

6 Record Config

Note: it supports to the device with SD card slot and the regular manufacturer's SD card.

6.1 storage management

After install the TF card, startup the video camera. Go to <Device config>-<Advanced>-<HDD Manage > format and part the TF card. After partition, go to < Read/Write > and < snapshot >, change the TF card to write/read partition.

Note: To ensure the device with normal video record, it needs one write/read disk partition at least on the storage device.

6.2 record config

Go to <Device config >-<Record>-<Record>, config the record.

【 Period】 Set the time section of common recording, The recording will start only among the set range.

【 Record type】 Set recording type: regular, detection, alarm.

Regular: Record according to the set time section. The video file type is “R”.

Detect: Within the set time section, trigger the motion detect, video blind, video loss or abnormal analysis. When above alarm is set as opening recording, the recording detection state is on. The video file type is M.

Alarm: when alarm happen, trigger alarm input, the recording detection state is on.

7 Video Playback

Play back the video file on TF card. Go to[Main Menu]> 【 Playback】 > 【 Remote】 ,enter into the video playback interface.

Note: Make sure the video can normal playback, the TF card used for video files storage must set to the read/write disk, or only read disk.

8 Product warranty card

Product Name		Model	
Purchase Date		Distributor	
Purchase Place			
Customer Name		Occupation	
Tel		Post Code	
Company			
Address			

Warranty notice:

Warranty period: One year. The Warranty Card only applies for the products purchased from our company.

Please take care of it to get more efficient and better service.